



Butterfly Cottage 4 School View, Main Street

Ulverston, LA12 9QT

This delightful 2 bed cottage is located in the village of Bardsea and is just 350 yards from the beach. The market town of Ulverston is a few minutes drive away and has a good range of shops and eateries. The property comprises an open plan living / dining area with a log burner, well appointed kitchen with appliances and to the upstairs there are two bedrooms and a shower room. There is also an enclosed garden with a patio area. Modern decor throughout. Viewings are highly recommended.

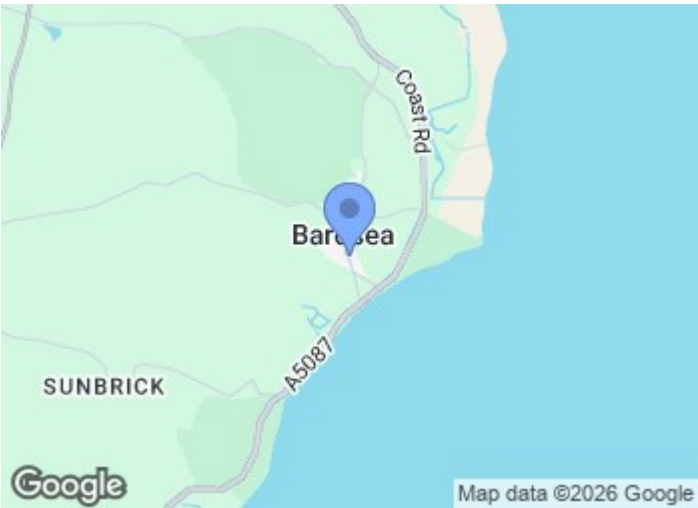
£995 Per Calendar Month

Butterfly Cottage 4 School View, Main Street

Ulverston, LA12 9QT



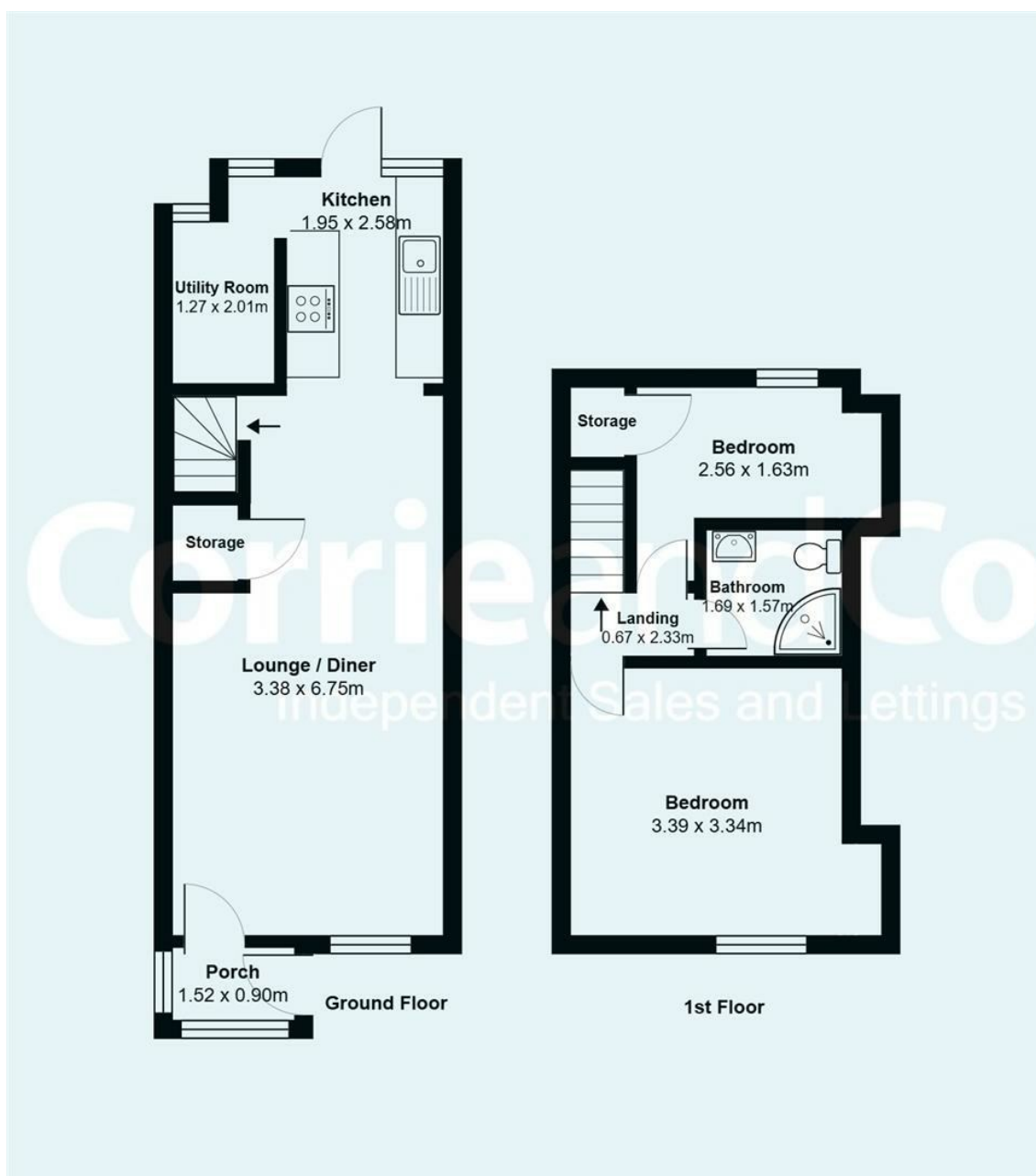
- Charming UNFURNISHED Cottage
- Modern Decor
- Council Tax Band C
- Two Bedroom
- Small dog may be considered
- EPC D
- Enclosed Garden with Patio
- Village Location



Directions



Floor Plan



Corrie and Co aim to sell your property at the best possible price in the shortest possible time. We have developed a clear marketing strategy to ensure that your property is fully exposed to the local, regional and national market place and we are confident that we can provide a marketing service second to none. Our Sales Team offer:

- Full colour contemporary sales literature with floorplans
- A full programme of local / regional advertising and promotion on the Corrie and Co and Rightmove websites
- 24/7 promotion in our Barrow, Ulverston and Millom offices
- Professional viewing service and prompt feedback
- Experienced, friendly staff
- Eye catching 'For Sale' board

To ensure your move is looked after, we can help you with an Energy Performance Certificate and arrange a free mortgage and finance review. We also provide a competitive No Sale – No Fee conveyancing service with well known and trusted local solicitors. Our valuation and sales advice is impartial, completely free with no obligation.

Unlike many High Street Estate Agency chains, Corrie and Co are wholly independent and can therefore recommend the mortgage and lender that is most suitable for your needs. Our aim is to provide quality advice and expertise at all times so that you can make an informed decision every step of the way.

